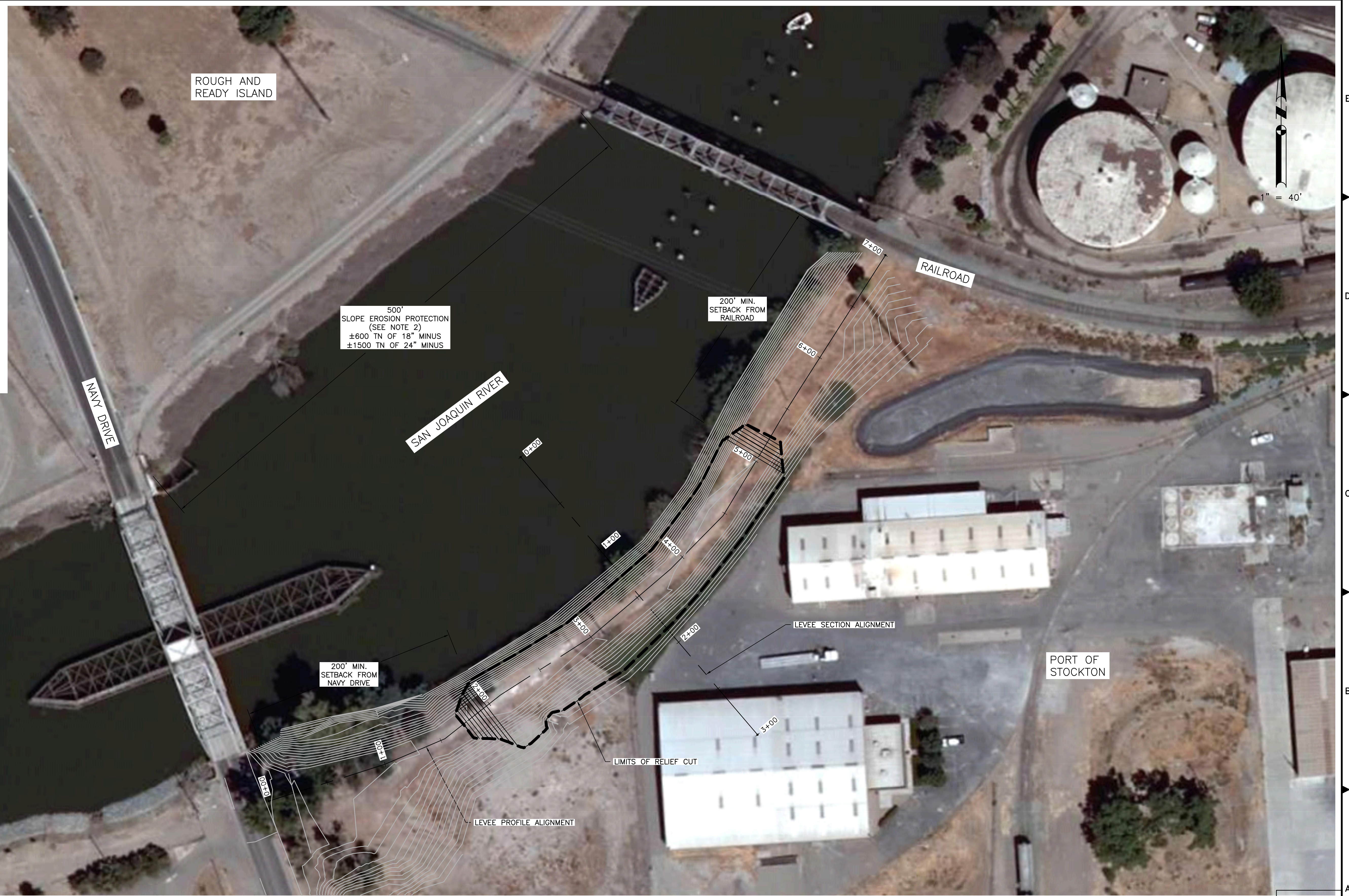


LEGEND

AC	ASPHALT CONCRETE
CA	CABLE
CCTV	CLOSED CIRCUIT TELEVISION
CMPA	CORRUGATED METAL PIPE ARCH
DI	DROP INLET
EX.	EXISTING
FM	FORCE MAIN
G	GAS
KV	KILOVOLT
OH	OVERHEAD
RCP	REINFORCED CONCRETE PIPE
S	SANITARY SEWER
SD	STORM DRAIN
STL	STEEL
TDC	TOP DEAD CENTER
W	WATER

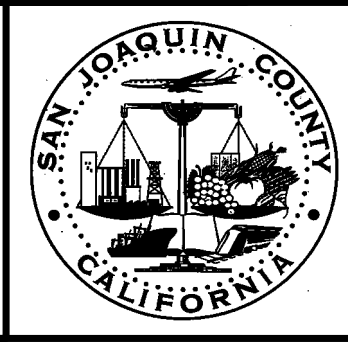
- NOTES:**
1. ALL EXISTING UTILITIES LOCATED WITHIN THE RELIEF CUT SHALL BE CUT AND CAPPED JUST OUTSIDE OF THE LIMITS OF THE RELIEF CUT.
 2. SLOPE EROSION PROTECTION SHALL BE CONSTRUCTED ON THE ENTIRE WATERSIDE SLOPE OF THE OPPOSITE BANK OF SMITH CANAL CONSISTING OF ONE LAYER OF 18" MINUS RIPRAP AND ONE LAYER OF 24" MINUS RIPRAP.

BASIS OF ELEVATIONS
 ELEVATIONS SHOWN ARE BASED ON THE NORTH AMERICAN VERTICAL DATUM OF 1988 (NAVD 88).



PRELIMINARY
 NOT FOR CONSTRUCTION
 - FOR STUDY ONLY -

FILE SPEC: P:\1942_SJC_Flood_Flight_Maps\0030-FM FEMA Pilot Maps\0030\05_Civil\PE_D_Boggs_Relief Cut_Port of Stockton.dwg
 PLOT DATE: May 06, 2010 - 8:49am



SAN JOAQUIN COUNTY
 OFFICE OF EMERGENCY SERVICES

K S N KJELDSSEN SINNOCK NEUDECK INC.
 Civil Engineers and Land Surveyors
 Post Office Box 844
 711 N. Pershing Avenue
 Stockton, CA 95201-0844
 Office: (209) 946-0268
 Faxes: (209) 946-0296
 E-mail: KSN@ksninc.com

**CITY OF STOCKTON
 SAN JOAQUIN COUNTY
 BOGGS TRACT**

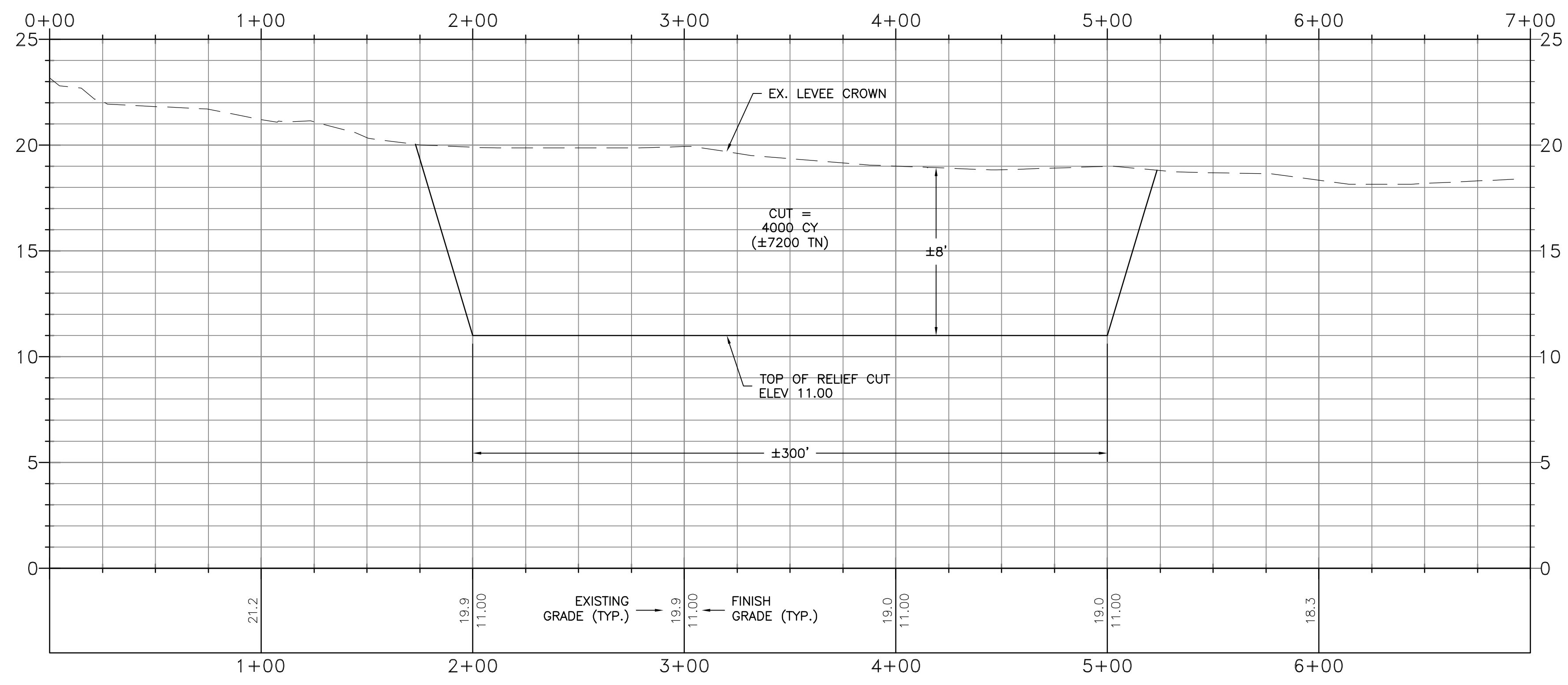
**PORT OF STOCKTON RELIEF CUT
 PRELIMINARY ENGINEERING DESIGN (P.E.D.)**

Revisions				
No.	Description	Date	By	Aprvd. By

Design EEA	Scale AS SHOWN Original Drawing Scale 0 1/2" 1" [Graphic Scale]	Date MARCH 2010
Drawn EEA		Sheet Number 1 Of 2
Check CHN		Project File No. 1942-0030

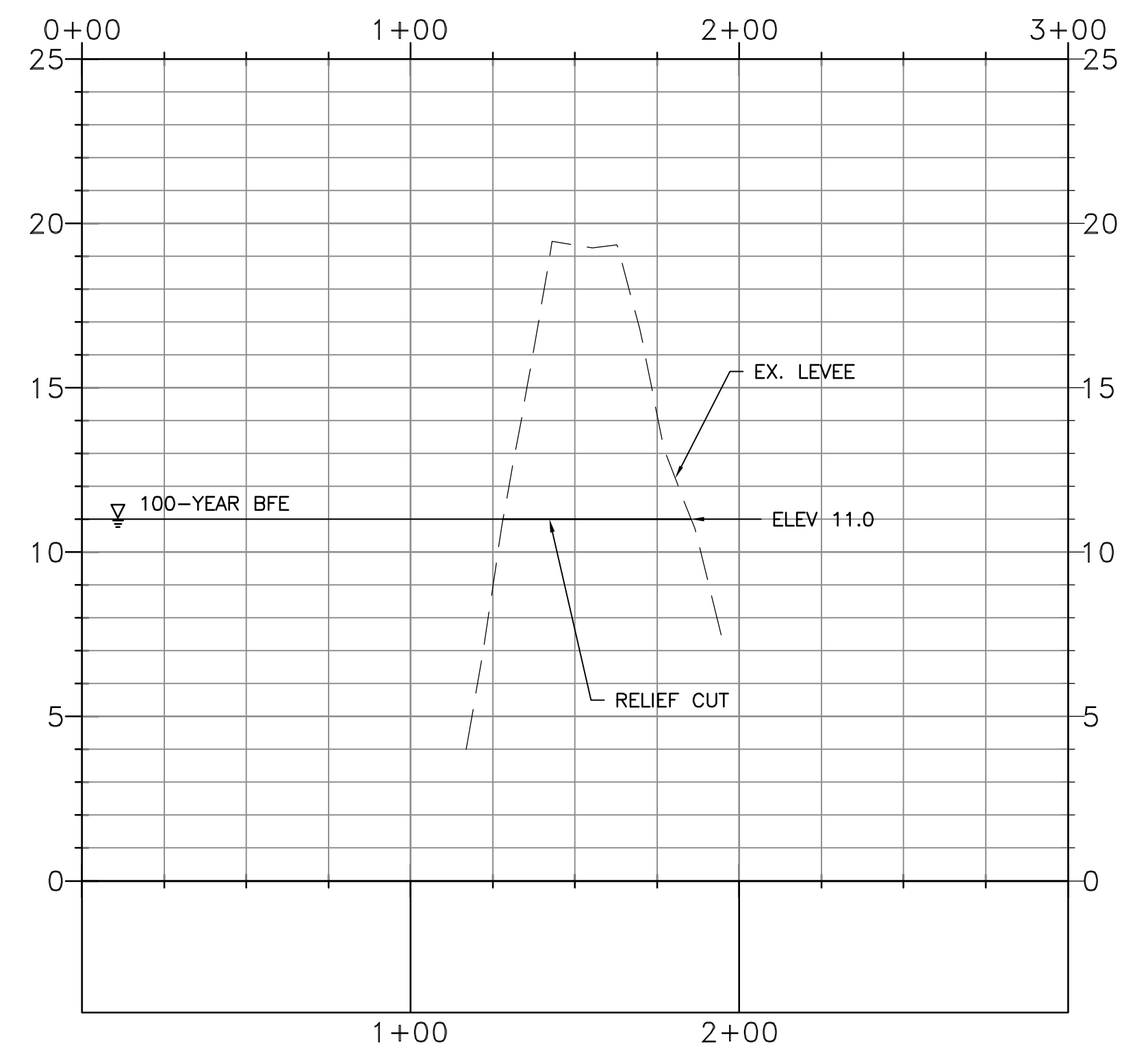
LEVEE PROFILE

SCALE
HORIZONTAL: 1"=40'
VERTICAL: 1"=4'



LEVEE SECTION

SCALE
HORIZONTAL: 1"=40'
VERTICAL: 1"=4'



LEGEND

- AC ASPHALT CONCRETE
- CA CABLE
- CCTV CLOSED CIRCUIT TELEVISION
- CMPA CORRUGATED METAL PIPE ARCH
- DI DROP INLET
- EX. EXISTING
- FM FORCE MAIN
- G GAS
- KV KILOVOLT
- OH OVERHEAD
- RCP REINFORCED CONCRETE PIPE
- S SANITARY SEWER
- SD STORM DRAIN
- STL STEEL
- TDC TOP DEAD CENTER
- W WATER

NOTES:

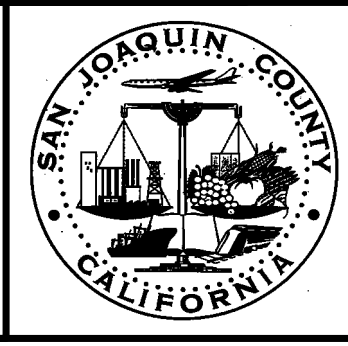
1. ALL EXISTING UTILITIES LOCATED WITHIN THE RELIEF CUT SHALL BE CUT AND CAPPED JUST OUTSIDE OF THE LIMITS OF THE RELIEF CUT.
2. RELIEF CUT ELEVATIONS ARE BASED ON A 100-YEAR STORM EVENT AND MAY NEED TO BE REVISED BASED ON ACTUAL STORM AND WATER LEVEL CONDITIONS.

BASIS OF ELEVATIONS
ELEVATIONS SHOWN ARE BASED ON THE NORTH AMERICAN VERTICAL DATUM OF 1988 (NAVD 88).

INCLUDES COPYRIGHTED MATERIAL OF DIGITAL GLOBE, INC. ALL RIGHTS RESERVED. BACKGROUND AERIAL PHOTOGRAPHY IS THE 2008 1-FOOT RESOLUTION STOCKTON/MODESTO AERIAL PHOTOGRAPHY FROM DIGITAL GLOBE ACQUIRED FROM LANDISCORP. CONTACT KSN INC. FOR MORE INFORMATION.

PRELIMINARY
NOT FOR CONSTRUCTION
- FOR STUDY ONLY -

FILE SPEC: P:\1942_SJC_Flood_Flight_Maps\0030-FCM FEMA Pilot Maps\0030\05_Civil\PED_Boggs_Relief_Cut_Port of Stockton.dwg
PLOT DATE: May 06, 2010 - 8:52am



SAN JOAQUIN COUNTY
OFFICE OF EMERGENCY SERVICES

KSN INC.
KJELDSSEN
SINNOCK
NEUDECK
Civil Engineers
and Land Surveyors
Post Office Box 844
711 N. Pershing Avenue
Stockton, CA 95201-0844
Office: (209) 946-0268
Faxes: (209) 946-0296
E-mail: KSN@ksninc.com

CITY OF STOCKTON
SAN JOAQUIN COUNTY
BOGGS TRACT

PORT OF STOCKTON RELIEF CUT
PRELIMINARY ENGINEERING DESIGN (P.E.D.)

Revisions				
No.	Description	Date	By	Aprvd. By

Design EEA	Scale AS SHOWN	Date MARCH 2010
Drawn EEA	Original Drawing Scale 0 1/2" 1"	Sheet Number 2 Of 2
Check CHN		Project File No. 1942-0030

FILE SPEC: P:\1942_SJC_Flood_Flight_Maps\0030-FCM FEMA Pilot Maps\0030\05_Civil_VPE_D_Boggs_Emergency Berrm_Boggs.dwg
 PLOT DATE: May 06, 2010 - 7:35am



PRELIMINARY
 NOT FOR CONSTRUCTION
 - FOR STUDY ONLY -

INCLUDES COPYRIGHTED MATERIAL OF DIGITAL GLOBE, INC. ALL RIGHTS RESERVED. BACKGROUND AERIAL PHOTOGRAPHY IS THE 2008 1-FOOT RESOLUTION STOCKTON/MODESTO AERIAL PHOTOGRAPHY FROM DIGITAL GLOBE ACQUIRED FROM LANDISCORP. CONTACT KSN INC. FOR MORE INFORMATION.

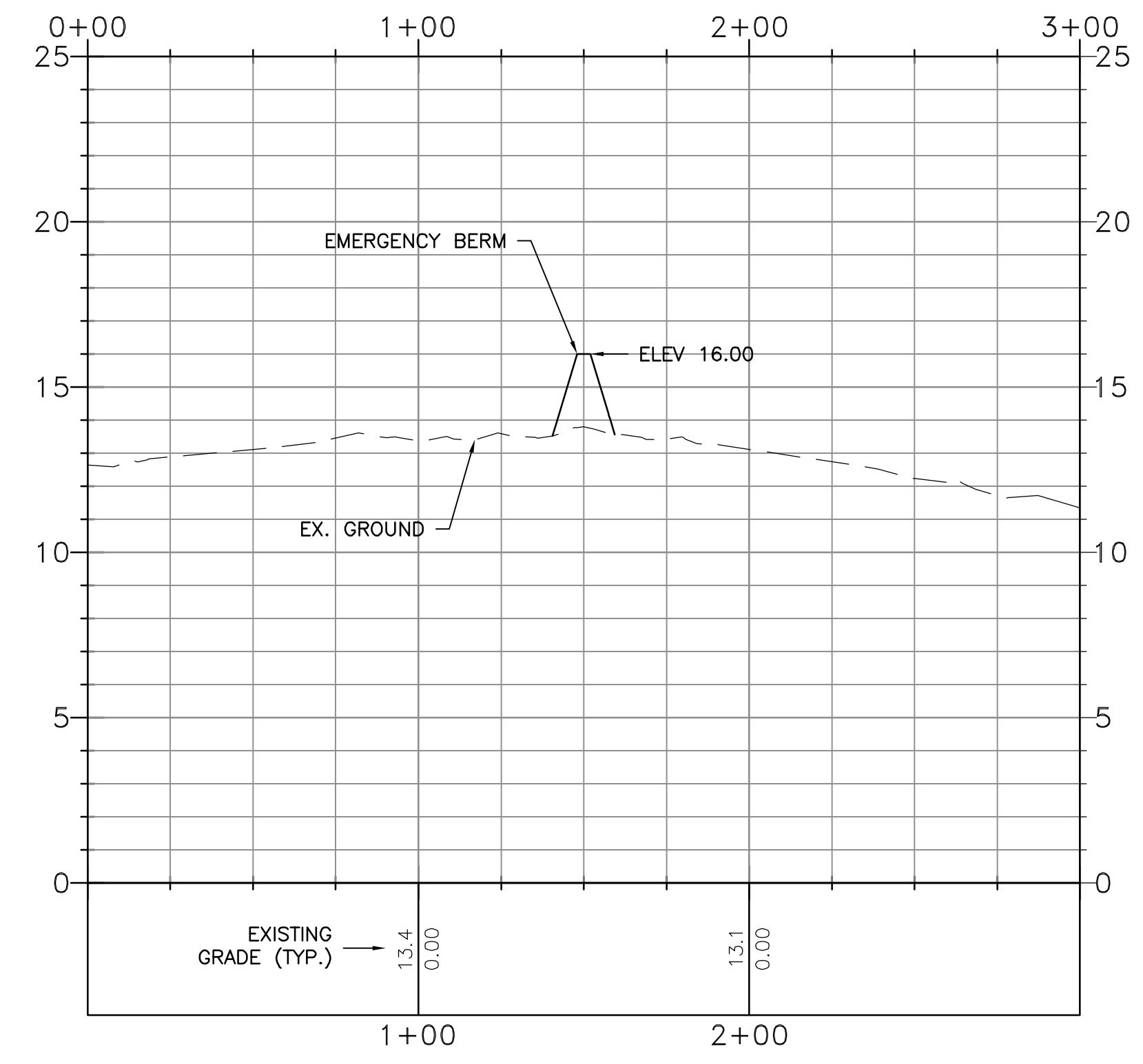
LEGEND

AC	ASPHALT CONCRETE
CA	CABLE
CCTV	CLOSED CIRCUIT TELEVISION
CMPA	CORRUGATED METAL PIPE ARCH
DI	DROP INLET
EX.	EXISTING
FM	FORCE MAIN
G	GAS
KV	KILOVOLT
OH	OVERHEAD
RCP	REINFORCED CONCRETE PIPE
S	SANITARY SEWER
SD	STORM DRAIN
STL	STEEL
TDC	TOP DEAD CENTER
W	WATER

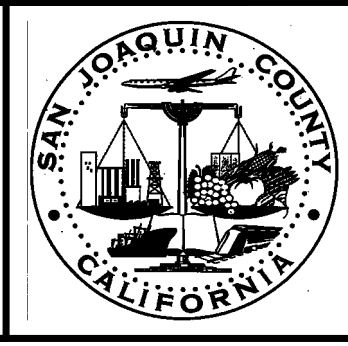
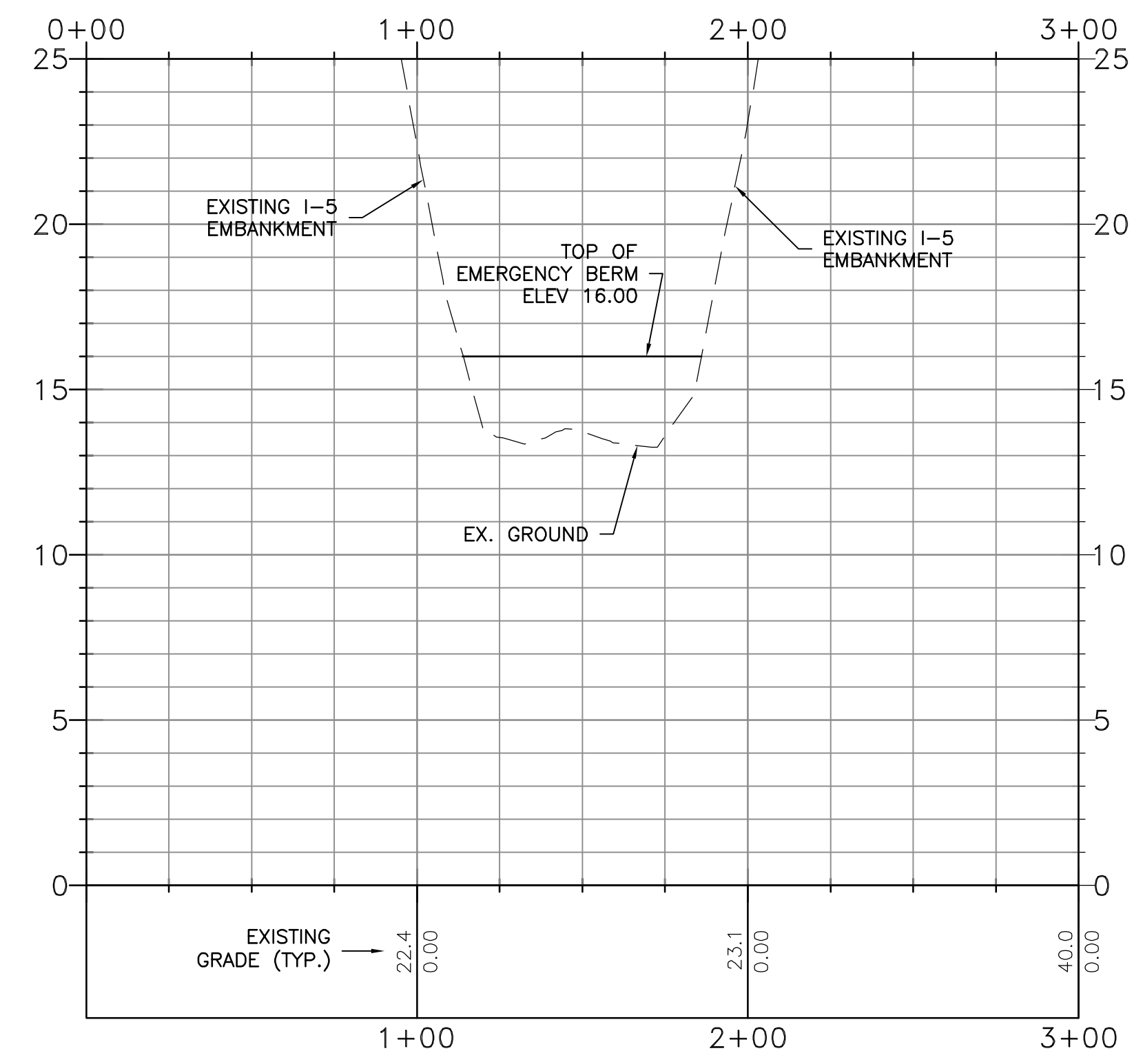
- NOTES:**
- EMERGENCY BERM SHALL BE CONSTRUCTED OF SANDBAGS, MUSCLE WALL, OR EQUAL.
 - EMERGENCY BERM ELEVATIONS ARE BASED ON A 100-YEAR STORM EVENT AND MAY NEED TO BE REVISED BASED ON ACTUAL STORM AND WATER LEVEL CONDITIONS.
 - BOGGS TRACT EMERGENCY BERMS ARE ONLY TO BE CONSTRUCTED IN CONJUNCTION WITH PORT OF STOCKTON RELIEF CUT AND/OR MORMON SLOUGH EMERGENCY PUMPING.

BASIS OF ELEVATIONS
 ELEVATIONS SHOWN ARE BASED ON THE NORTH AMERICAN VERTICAL DATUM OF 1988 (NAVD 88).

CHURCH STREET PROFILE
 SCALE
 HORIZONTAL: 1"=40'
 VERTICAL: 1"=4'



BERM ALIGNMENT PROFILE
 SCALE
 HORIZONTAL: 1"=40'
 VERTICAL: 1"=4'



SAN JOAQUIN COUNTY
 OFFICE OF EMERGENCY SERVICES

KSN INC.
 KJELDSSEN
 SINNOCK
 NEUDECK
 Civil Engineers
 and Land Surveyors
 Post Office Box 844
 711 N. Pershing Avenue
 Stockton, CA 95201-0844
 Office: (209) 946-0268
 Faxes: (209) 946-0296
 E-mail: KSN@ksninc.com

CITY OF STOCKTON
SAN JOAQUIN COUNTY
BOGGS TRACT
I-5 & CHURCH STREET
BOGGS TRACT EMERGENCY BERMS
 PRELIMINARY ENGINEERING DESIGN (P.E.D.)

Revisions				
No.	Description	Date	By	Aprvd. By

Design EEA	Scale AS SHOWN	Date MARCH 2010
Drawn EEA	Original Drawing Scale 0 1/2" 1"	Sheet Number 1 Of 5
Check CHN		Project File No. 1942-0030

FILE SPEC: P:\1942_SJC_Flood_Flight_Maps\0030-FCM FEMA Pilot Maps\0030\05_Civil_VED_Boggs_Emergency Berm_Boggs.dwg
 PLOT DATE: May 06, 2010 - 7:32am



INCLUDES COPYRIGHTED MATERIAL OF DIGITAL GLOBE, INC. ALL RIGHTS RESERVED. BACKGROUND AERIAL PHOTOGRAPHY IS THE 2008 1-FOOT RESOLUTION STOCKTON/MODESTO AERIAL PHOTOGRAPHY FROM DIGITAL GLOBE ACQUIRED FROM LANDISCORP. CONTACT KSN INC. FOR MORE INFORMATION.

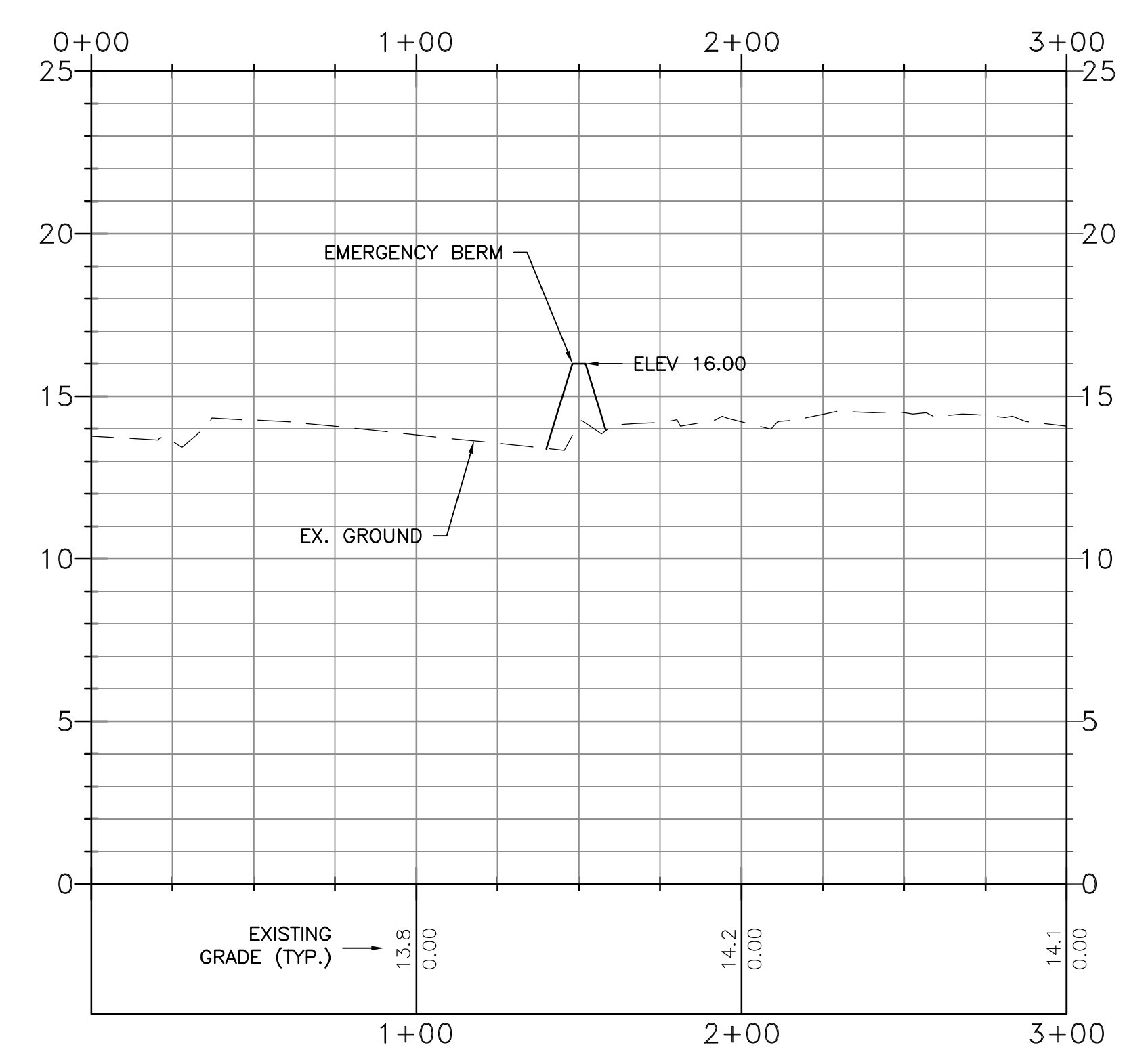
LEGEND

AC	ASPHALT CONCRETE
CA	CABLE
CCTV	CLOSED CIRCUIT TELEVISION
CMPA	CORRUGATED METAL PIPE ARCH
DI	DROP INLET
EX.	EXISTING
FM	FORCE MAIN
G	GAS
KV	KILOVOLT
OH	OVERHEAD
RCP	REINFORCED CONCRETE PIPE
S	SANITARY SEWER
SD	STORM DRAIN
STL	STEEL
TDC	TOP DEAD CENTER
W	WATER

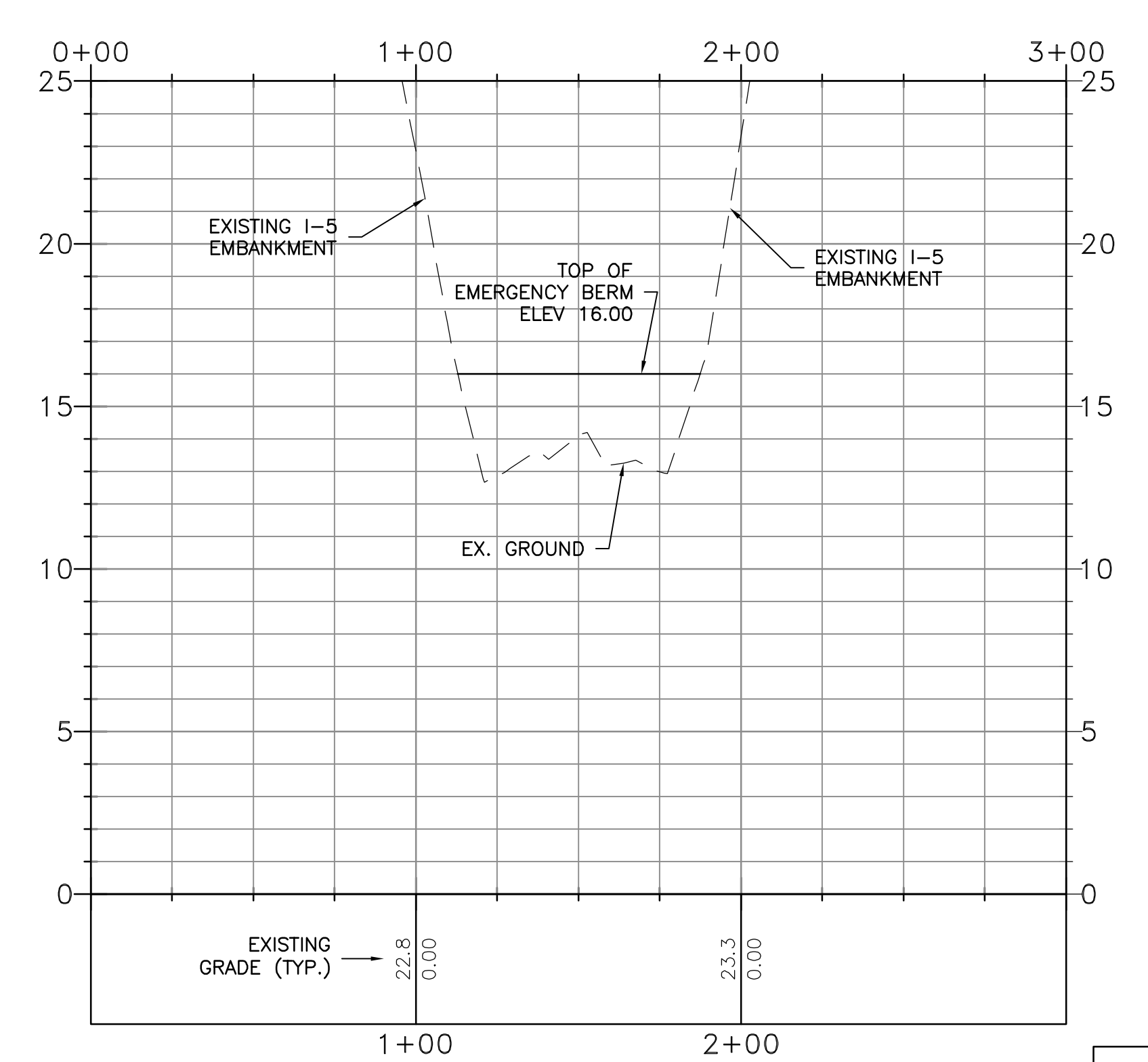
- NOTES:**
- EMERGENCY BERM SHALL BE CONSTRUCTED OF SANDBAGS, MUSCLE WALL, OR EQUAL.
 - EMERGENCY BERM ELEVATIONS ARE BASED ON A 100-YEAR STORM EVENT AND MAY NEED TO BE REVISED BASED ON ACTUAL STORM AND WATER LEVEL CONDITIONS.
 - BOGGS TRACT EMERGENCY BERMS ARE ONLY TO BE CONSTRUCTED IN CONJUNCTION WITH PORT OF STOCKTON RELIEF CUT AND/OR MORMON SLOUGH EMERGENCY PUMPING.

BASIS OF ELEVATIONS
 ELEVATIONS SHOWN ARE BASED ON THE NORTH AMERICAN VERTICAL DATUM OF 1988 (NAVD 88).

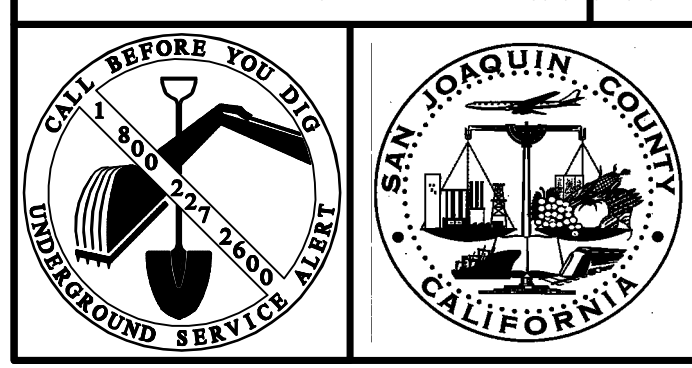
SANTA FE RR PROFILE
 SCALE
 HORIZONTAL: 1"=40'
 VERTICAL: 1"=4'



BERM ALIGNMENT PROFILE
 SCALE
 HORIZONTAL: 1"=40'
 VERTICAL: 1"=4'



PRELIMINARY
 NOT FOR CONSTRUCTION
 - FOR STUDY ONLY -



SAN JOAQUIN COUNTY
 OFFICE OF EMERGENCY SERVICES

KSN INC.
 KJELDSSEN SINNOCK NEUDECK
 Civil Engineers and Land Surveyors
 Post Office Box 844
 711 N. Pershing Avenue
 Stockton, CA 95201-0844
 Office: (209) 946-0268
 Faxes: (209) 946-0296
 E-mail: KSN@ksninc.com

**CITY OF STOCKTON
 SAN JOAQUIN COUNTY
 BOGGS TRACT**
**I-5 & SANTA FE RAILROAD
 BOGGS TRACT EMERGENCY BERMS**
 PRELIMINARY ENGINEERING DESIGN (P.E.D.)

Revisions					Design EEA	Scale AS SHOWN	Date MARCH 2010
No.	Description	Date	By	Aprvd. By			
					Drawn EEA	Original Drawing Scale 0 1/2" 1"	Sheet Number 2 Of 5
					Check CHN	Project File No. 1942-0030	



INCLUDES COPYRIGHTED MATERIAL OF DIGITAL GLOBE, INC. ALL RIGHTS RESERVED. BACKGROUND AERIAL PHOTOGRAPHY IS THE 2008 1-FOOT RESOLUTION STOCKTON/MODESTO AERIAL PHOTOGRAPHY FROM DIGITAL GLOBE ACQUIRED FROM LANDISCORP. CONTACT KSN INC. FOR MORE INFORMATION.

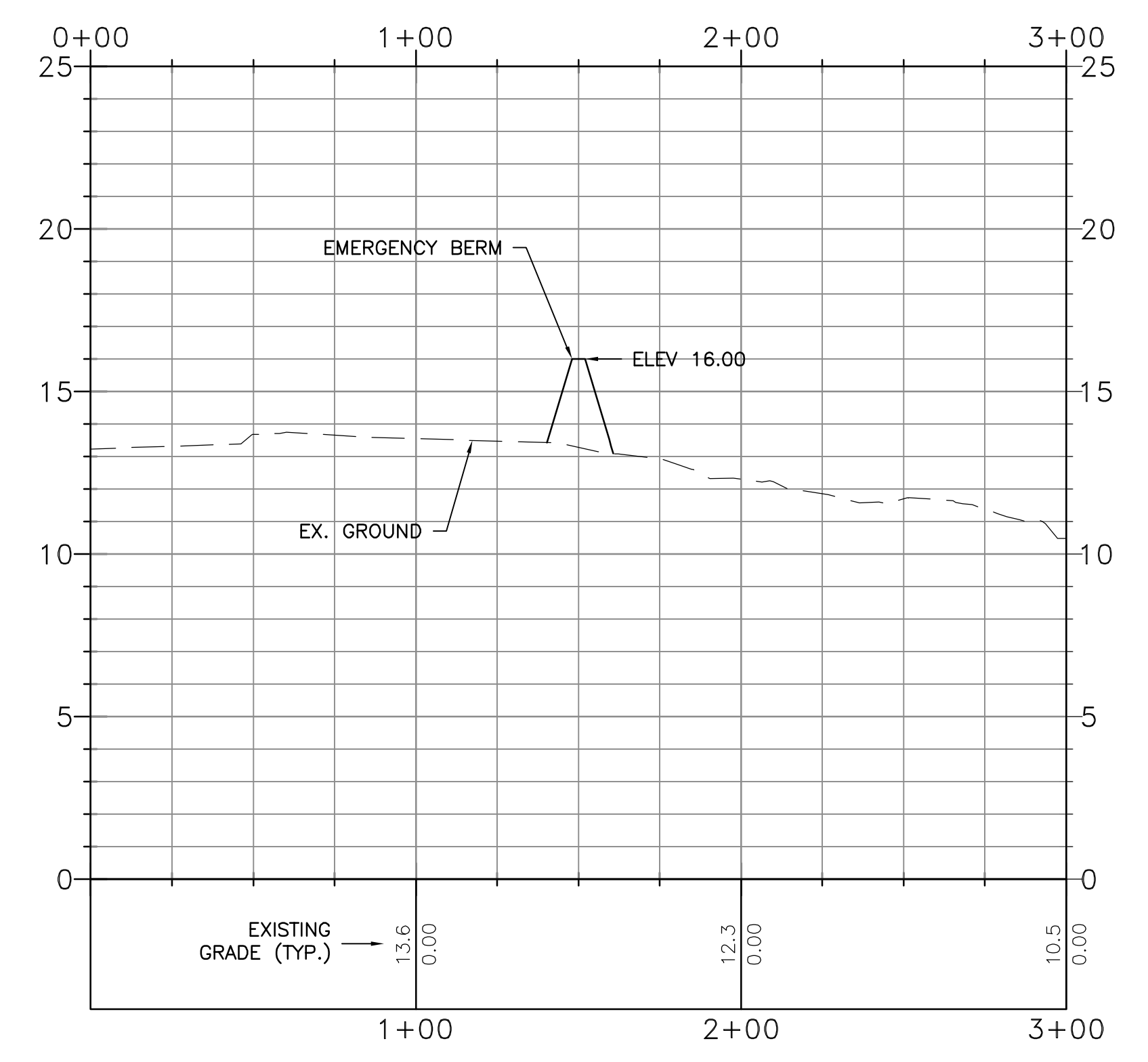
LEGEND

AC	ASPHALT CONCRETE
CA	CABLE
CCTV	CLOSED CIRCUIT TELEVISION
CMPA	CORRUGATED METAL PIPE ARCH
DI	DROP INLET
EX.	EXISTING
FM	FORCE MAIN
G	GAS
KV	KILOVOLT
OH	OVERHEAD
RCP	REINFORCED CONCRETE PIPE
S	SANITARY SEWER
SD	STORM DRAIN
STL	STEEL
TDC	TOP DEAD CENTER
W	WATER

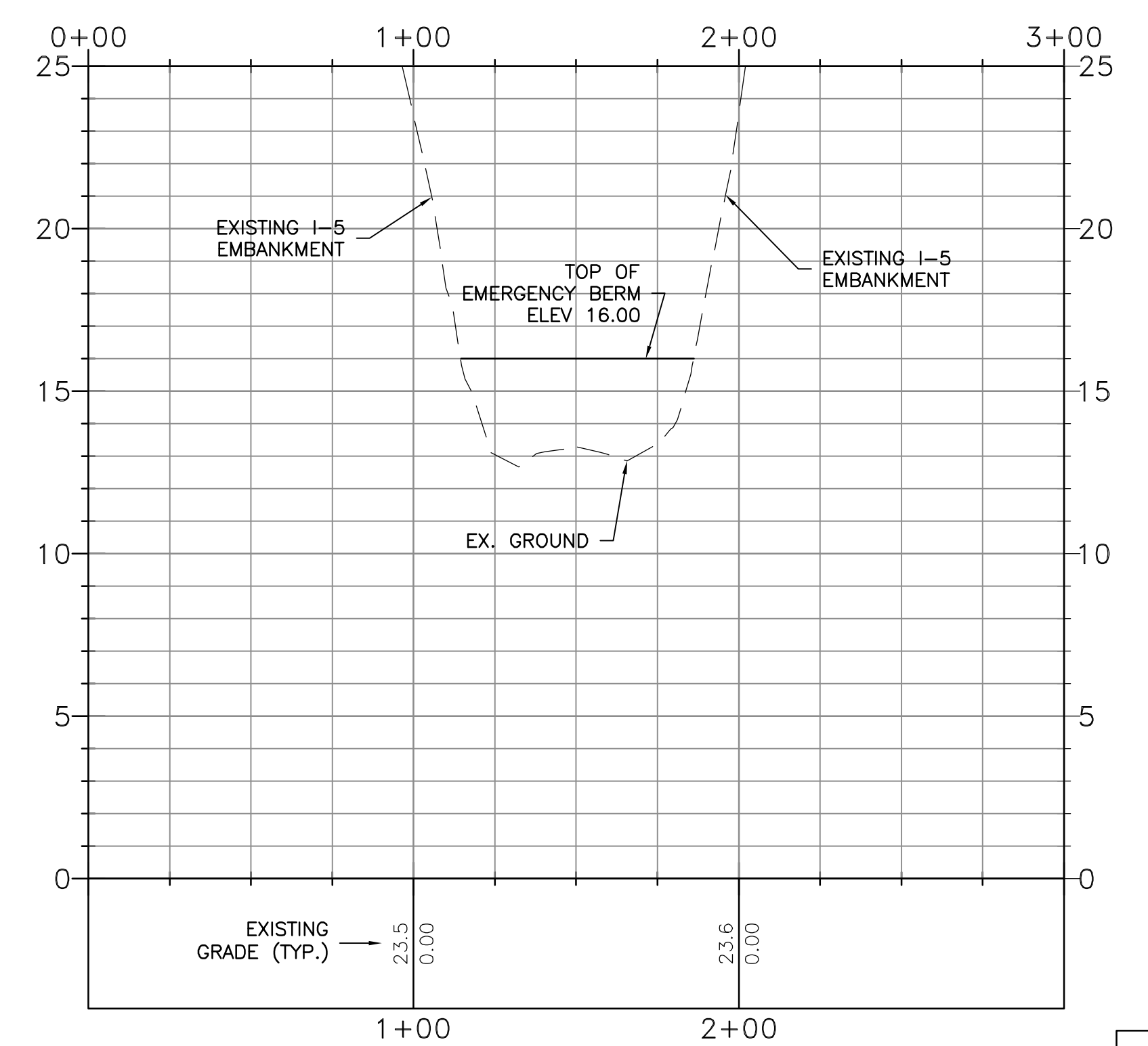
- NOTES:**
- EMERGENCY BERM SHALL BE CONSTRUCTED OF SANDBAGS, MUSCLE WALL, OR EQUAL.
 - EMERGENCY BERM ELEVATIONS ARE BASED ON A 100-YEAR STORM EVENT AND MAY NEED TO BE REVISED BASED ON ACTUAL STORM AND WATER LEVEL CONDITIONS.
 - BOGGS TRACT EMERGENCY BERMS ARE ONLY TO BE CONSTRUCTED IN CONJUNCTION WITH PORT OF STOCKTON RELIEF CUT AND/OR MORMON SLOUGH EMERGENCY PUMPING.

BASIS OF ELEVATIONS
 ELEVATIONS SHOWN ARE BASED ON THE NORTH AMERICAN VERTICAL DATUM OF 1988 (NAVD 88).

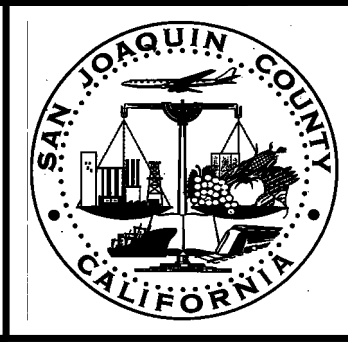
ANDERSON STREET PROFILE
 SCALE
 HORIZONTAL: 1"=40'
 VERTICAL: 1"=4'



BERM ALIGNMENT PROFILE
 SCALE
 HORIZONTAL: 1"=40'
 VERTICAL: 1"=4'



PRELIMINARY
 NOT FOR CONSTRUCTION
 - FOR STUDY ONLY -



SAN JOAQUIN COUNTY
 OFFICE OF EMERGENCY SERVICES

KSN INC.
KJELDSSEN SINNOCK NEUDECK
 Civil Engineers and Land Surveyors
 Post Office Box 844
 711 N. Pershing Avenue
 Stockton, CA 95201-0844
 Office: (209) 946-0268
 Faxes: (209) 946-0296
 E-mail: KSN@ksninc.com

CITY OF STOCKTON
SAN JOAQUIN COUNTY
BOGGS TRACT
I-5 & ANDERSON STREET
BOGGS TRACT EMERGENCY BERMS
 PRELIMINARY ENGINEERING DESIGN (P.E.D.)

Revisions				
No.	Description	Date	By	Aprvd. By

Design EEA	Scale AS SHOWN Original Drawing Scale 0 1/2" 1"	Date MARCH 2010
Drawn EEA		Sheet Number 3 Of 5
Check CHN		Project File No. 1942-0030

FILE SPEC: P:\1942_SJC_Flood_Flight_Maps\0030-FCM FEMA Pilot Maps\0030\05_Civil_VPD_Boggs_Emergency BERM_Boggs.dwg
 PLOT DATE: May 06, 2010 - 7:25am

FILE SPEC: P:\1942_SJC_Flood_Flight_Maps\0030-FCM FEMA Pilot Maps\0030\05_Civil\PED_Boggs_Emergency Berm_Boggs.dwg
 PLOT DATE: May 06, 2010 - 7:23am



INCLUDES COPYRIGHTED MATERIAL OF DIGITAL GLOBE, INC. ALL RIGHTS RESERVED. BACKGROUND AERIAL PHOTOGRAPHY IS THE 2008 1-FOOT RESOLUTION STOCKTON/MODESTO AERIAL PHOTOGRAPHY FROM DIGITAL GLOBE ACQUIRED FROM LANDISCORP. CONTACT KSN INC. FOR MORE INFORMATION.

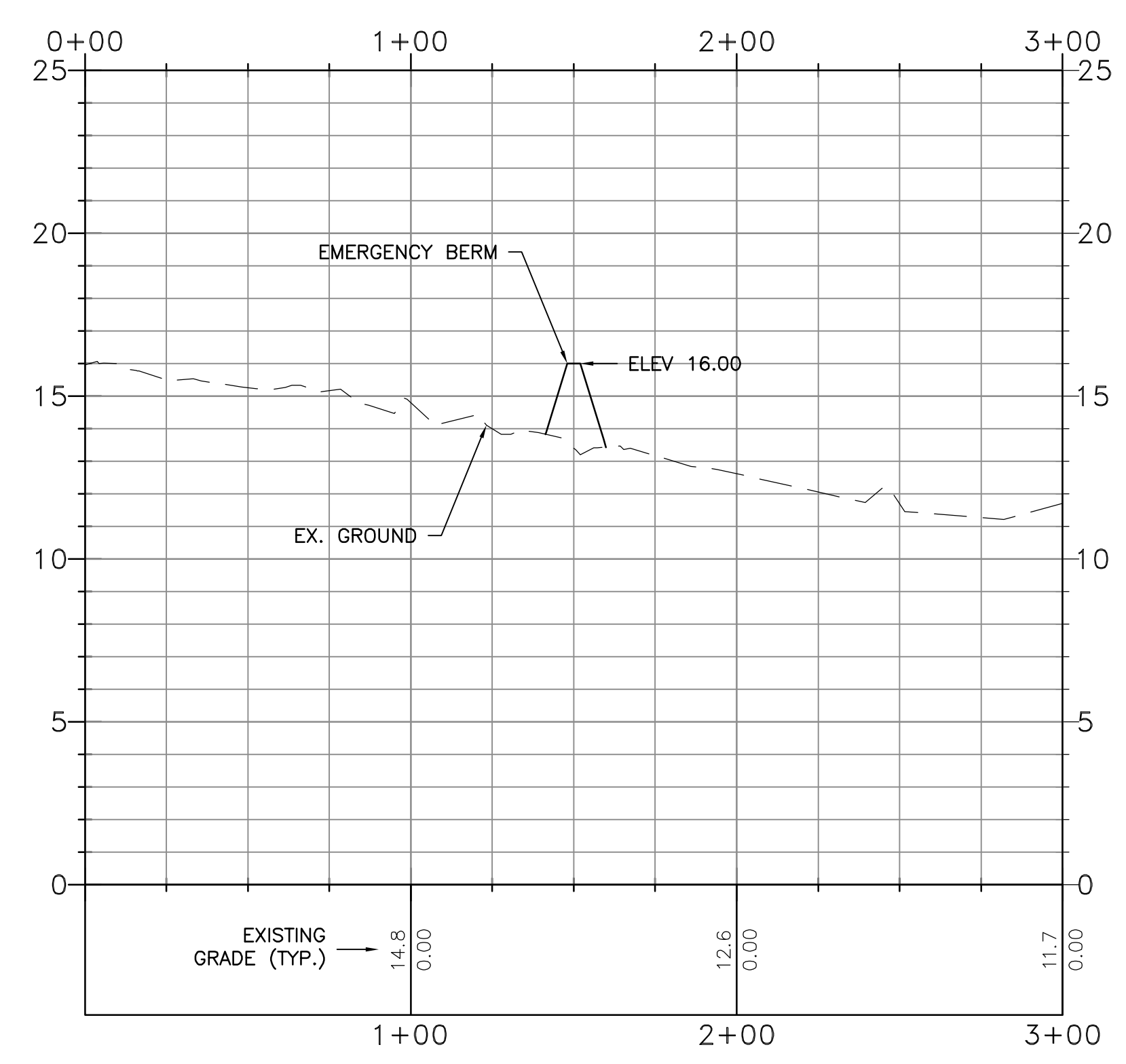
LEGEND

AC	ASPHALT CONCRETE
CA	CABLE
CCTV	CLOSED CIRCUIT TELEVISION
CMPA	CORRUGATED METAL PIPE ARCH
DI	DROP INLET
EX.	EXISTING
FM	FORCE MAIN
G	GAS
KV	KILOVOLT
OH	OVERHEAD
RCP	REINFORCED CONCRETE PIPE
S	SANITARY SEWER
SD	STORM DRAIN
STL	STEEL
TDC	TOP DEAD CENTER
W	WATER

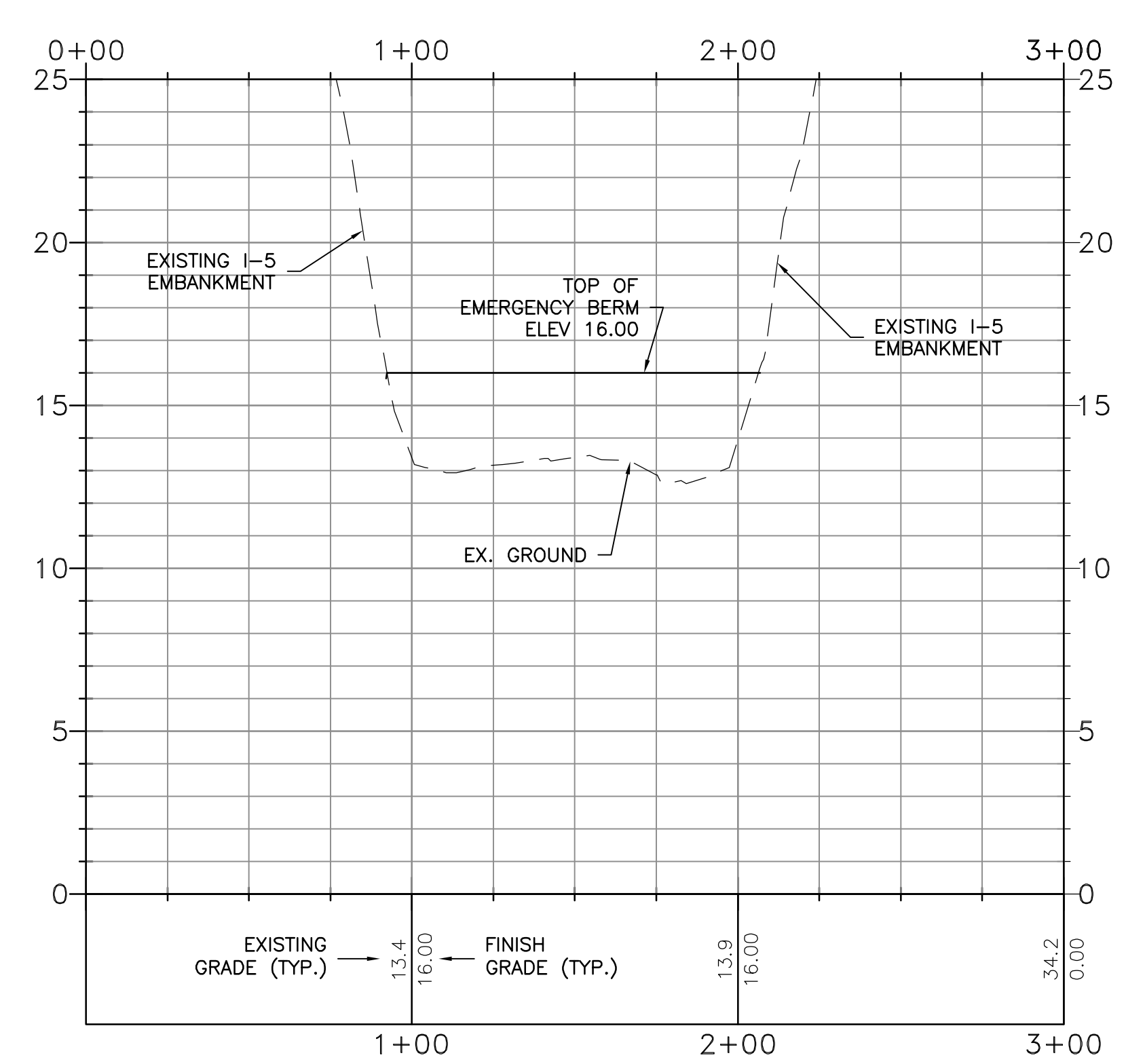
- NOTES:**
- EMERGENCY BERM SHALL BE CONSTRUCTED OF SANDBAGS, MUSCLE WALL, OR EQUAL.
 - EMERGENCY BERM ELEVATIONS ARE BASED ON A 100-YEAR STORM EVENT AND MAY NEED TO BE REVISED BASED ON ACTUAL STORM AND WATER LEVEL CONDITIONS.
 - BOGGS TRACT EMERGENCY BERMS ARE ONLY TO BE CONSTRUCTED IN CONJUNCTION WITH PORT OF STOCKTON RELIEF CUT AND/OR MORMON SLOUGH EMERGENCY PUMPING.

BASIS OF ELEVATIONS
 ELEVATIONS SHOWN ARE BASED ON THE NORTH AMERICAN VERTICAL DATUM OF 1988 (NAVD 88).

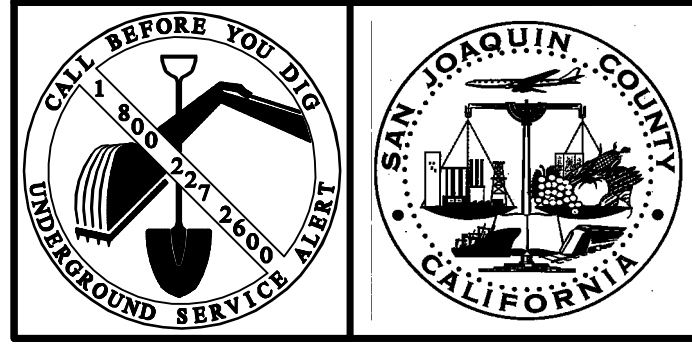
CHARTER WAY PROFILE
 SCALE
 HORIZONTAL: 1"=40'
 VERTICAL: 1"=4'



BERM ALIGNMENT PROFILE
 SCALE
 HORIZONTAL: 1"=40'
 VERTICAL: 1"=4'



PRELIMINARY
 NOT FOR CONSTRUCTION
 - FOR STUDY ONLY -



SAN JOAQUIN COUNTY
 OFFICE OF EMERGENCY SERVICES

KSN INC.
 KJELDSSEN SINNOCK NEUDECK
 Civil Engineers and Land Surveyors
 Post Office Box 844
 711 N. Pershing Avenue
 Stockton, CA 95201-0844
 Office: (209) 946-0268
 Faxes: (209) 946-0296
 E-mail: KSN@ksninc.com

CITY OF STOCKTON
 SAN JOAQUIN COUNTY
 BOGGS TRACT
I-5 & CHARTER WAY
 BOGGS TRACT EMERGENCY BERMS
 PRELIMINARY ENGINEERING DESIGN (P.E.D.)

Revisions				
No.	Description	Date	By	Aprvd. By

Design EEA	Scale AS SHOWN Original Drawing Scale 0 1/2" 1"	Date MARCH 2010
Drawn EEA		Sheet Number 4 Of 5
Check CHN		Project File No. 1942-0030

FILE SPEC: P:\1942_SJC_Flood_Flight_Maps\0030-FCM FEMA Pilot Maps\0030\05_Civil_VED_Boggs_Emergency Berrm_Boggs.dwg
 PLOT DATE: May 06, 2010 - 7:05am



PRELIMINARY
 NOT FOR CONSTRUCTION
 - FOR STUDY ONLY -

INCLUDES COPYRIGHTED MATERIAL OF DIGITAL GLOBE, INC. ALL RIGHTS RESERVED. BACKGROUND AERIAL PHOTOGRAPHY IS THE 2008 1-FOOT RESOLUTION STOCKTON/MODESTO AERIAL PHOTOGRAPHY FROM DIGITAL GLOBE ACQUIRED FROM LANDISCORP. CONTACT KSN INC. FOR MORE INFORMATION.

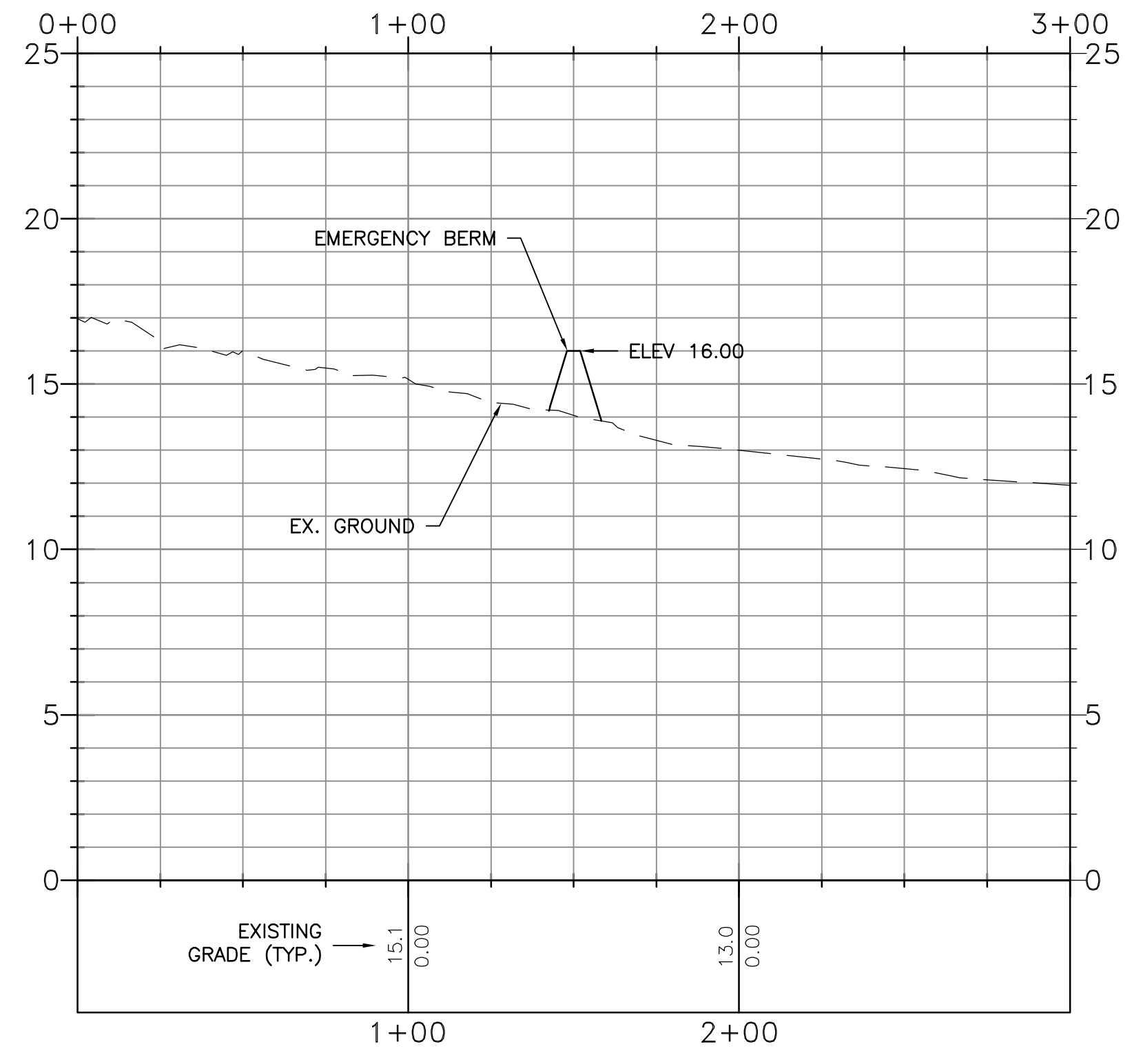
LEGEND

AC	ASPHALT CONCRETE
CA	CABLE
CCTV	CLOSED CIRCUIT TELEVISION
CMPA	CORRUGATED METAL PIPE ARCH
DI	DROP INLET
EX.	EXISTING
FM	FORCE MAIN
G	GAS
KV	KILOVOLT
OH	OVERHEAD
RCP	REINFORCED CONCRETE PIPE
S	SANITARY SEWER
SD	STORM DRAIN
STL	STEEL
TDC	TOP DEAD CENTER
W	WATER

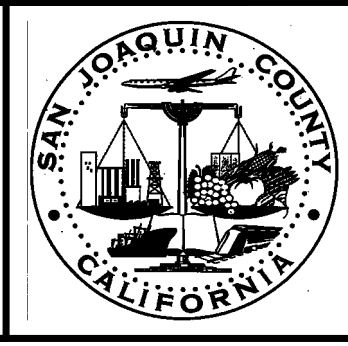
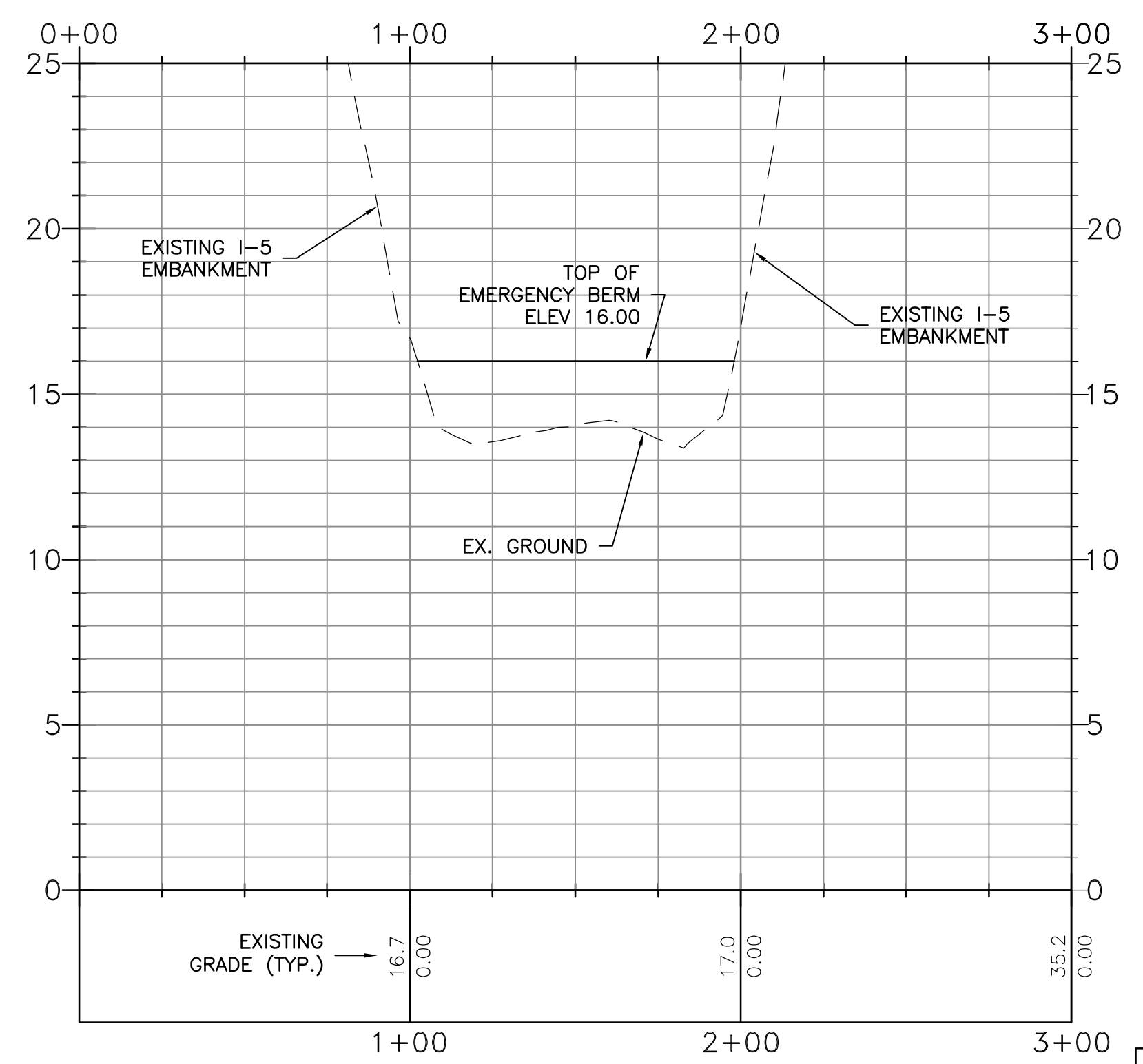
- NOTES:**
- EMERGENCY BERM SHALL BE CONSTRUCTED OF SANDBAGS, MUSCLE WALL, OR EQUAL.
 - EMERGENCY BERM ELEVATIONS ARE BASED ON A 100-YEAR STORM EVENT AND MAY NEED TO BE REVISED BASED ON ACTUAL STORM AND WATER LEVEL CONDITIONS.
 - BOGGS TRACT EMERGENCY BERMS ARE ONLY TO BE CONSTRUCTED IN CONJUNCTION WITH PORT OF STOCKTON RELIEF CUT AND/OR MORMON SLOUGH EMERGENCY PUMPING.

BASIS OF ELEVATIONS
 ELEVATIONS SHOWN ARE BASED ON THE NORTH AMERICAN VERTICAL DATUM OF 1988 (NAVD 88).

EIGHTH STREET PROFILE SCALE
 HORIZONTAL: 1"=40'
 VERTICAL: 1"=4'



BERM ALIGNMENT PROFILE SCALE
 HORIZONTAL: 1"=40'
 VERTICAL: 1"=4'



SAN JOAQUIN COUNTY
 OFFICE OF EMERGENCY SERVICES

KSN INC.
 KJELDSSEN SINNOCK NEUDECK
 Civil Engineers and Land Surveyors
 Post Office Box 844
 711 N. Pershing Avenue
 Stockton, CA 95201-0844
 Office: (209) 946-0268
 Faxes: (209) 946-0296
 E-mail: KSN@ksninc.com

CITY OF STOCKTON
SAN JOAQUIN COUNTY
BOGGS TRACT
I-5 & EIGHTH STREET
BOGGS TRACT EMERGENCY BERMS
 PRELIMINARY ENGINEERING DESIGN (P.E.D.)

Revisions				
No.	Description	Date	By	Aprvd. By

Design: EEA
 Drawn: EEA
 Check: CHN

Scale: AS SHOWN
 Original Drawing Scale: 0 1/2" = 1"
 Date: MARCH 2010
 Sheet Number: 5 Of 5
 Project File No.: 1942-0030



PRELIMINARY
NOT FOR CONSTRUCTION
- FOR STUDY ONLY -

INCLUDES COPYRIGHTED MATERIAL OF DIGITAL GLOBE, INC. ALL RIGHTS RESERVED. BACKGROUND AERIAL PHOTOGRAPHY IS THE 2008 1-FOOT RESOLUTION STOCKTON/MODESTO AERIAL PHOTOGRAPHY FROM DIGITAL GLOBE ACQUIRED FROM LANDISCORP. CONTACT KSN INC. FOR MORE INFORMATION.

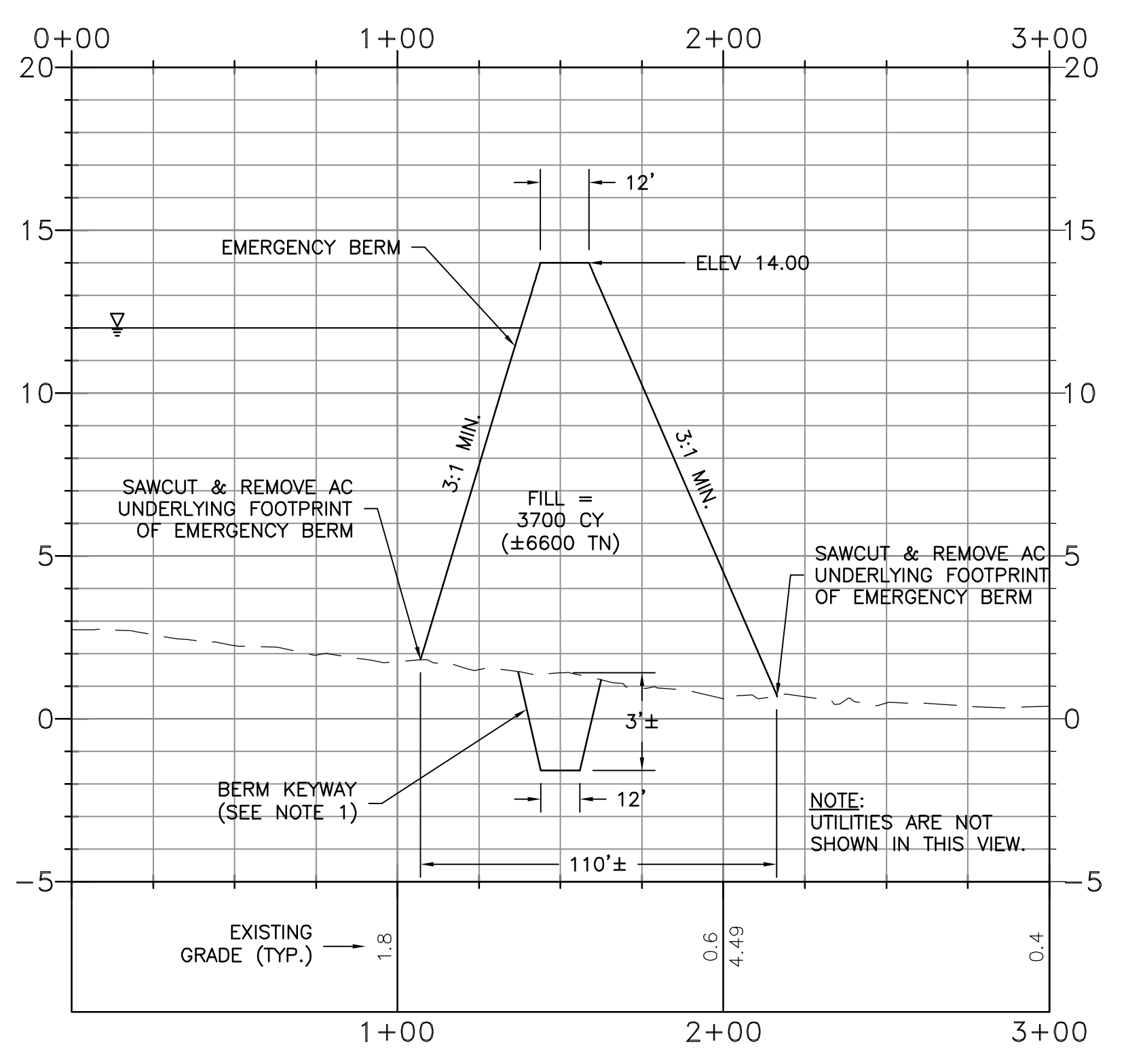
LEGEND

AC	ASPHALT CONCRETE
CA	CABLE
CCTV	CLOSED CIRCUIT TELEVISION
CMPA	CORRUGATED METAL PIPE ARCH
DI	DROP INLET
EX.	EXISTING
FM	FORCE MAIN
G	GAS
KV	KILOVOLT
OH	OVERHEAD
RCP	REINFORCED CONCRETE PIPE
S	SANITARY SEWER
SD	STORM DRAIN
STL	STEEL
TDC	TOP DEAD CENTER
W	WATER

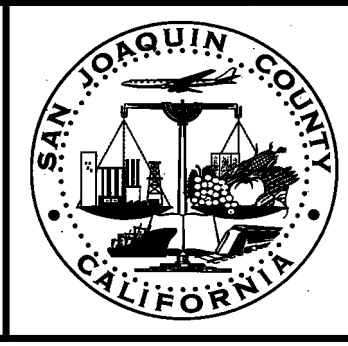
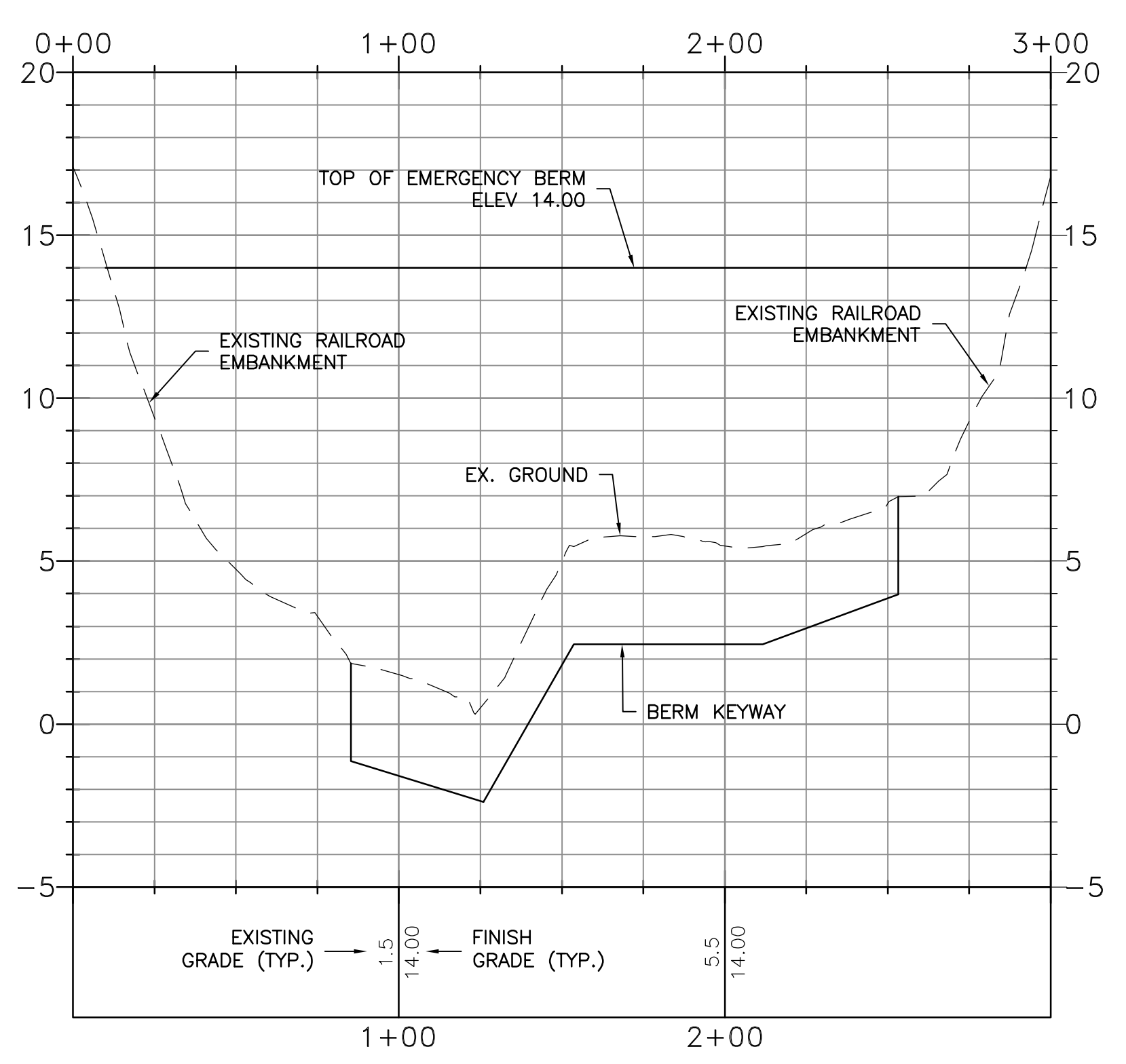
- NOTES:**
- CARE SHALL BE TAKEN WHEN EXCAVATING BERM KEYWAY. ADJUST DEPTH OF BERM KEYWAY AS NECESSARY (I.E. MAKE SHALLOWER AND WIDER) AS TO NOT CREATE CONFLICT WITH UNDERGROUND UTILITIES.
 - REMOVE ALL AC PAVEMENT, VEGETATION, TREES, AND FENCING WITHIN FOOTPRINT OF EMERGENCY BERM.
 - PLUG STORM DRAIN LINES AS NOTED.
 - FILL MATERIAL SHALL BE COMPACTED TO A MINIMUM 90% RELATIVE COMPACTION IN ACCORDANCE WITH ASTM D1557.
 - EMERGENCY BERM ELEVATIONS ARE BASED ON A 100-YEAR STORM EVENT AND MAY NEED TO BE REVISED BASED ON ACTUAL STORM AND WATER LEVEL CONDITIONS.
 - NAVY DRIVE EMERGENCY BERM IS ONLY TO BE CONSTRUCTED IN CONJUNCTION WITH PORT OF STOCKTON RELIEF CUT.

BASIS OF ELEVATIONS
ELEVATIONS SHOWN ARE BASED ON THE NORTH AMERICAN VERTICAL DATUM OF 1988 (NAVD 88).

NAVY DRIVE PROFILE
SCALE
HORIZONTAL: 1"=40'
VERTICAL: 1"=4'



BERM ALIGNMENT PROFILE
SCALE
HORIZONTAL: 1"=40'
VERTICAL: 1"=4'



SAN JOAQUIN COUNTY
OFFICE OF EMERGENCY SERVICES

KSN INC.
KJELDEN SINNOCK NEUDECK
Civil Engineers and Land Surveyors
Post Office Box 844
711 N. Pershing Avenue
Stockton, CA 95201-0844
Office: (209) 946-0268
Faxes: (209) 946-0296
E-mail: KSN@ksninc.com

**CITY OF STOCKTON
SAN JOAQUIN COUNTY
BOGGS TRACT**

**NAVY DRIVE EMERGENCY BERM
PRELIMINARY ENGINEERING DESIGN (P.E.D.)**

Revisions				
No.	Description	Date	By	Aprvd. By

Design: EEA
Drawn: EEA
Check: CHN

Scale: AS SHOWN
Original Drawing Scale: 0 1/2" = 1"

Date: MARCH 2010
Sheet Number: 1 Of 1
Project File No.: 1942-0030

FILE SPEC: P:\1942_SJC_Flood_Flight_Maps\0030-FCM FEMA Pilot Maps\0030\05_Civil\PED_Boggs_Emergency BERM_Navy.dwg
PLOT DATE: May 06, 2010 - 8:45am



INCLUDES COPYRIGHTED MATERIAL OF DIGITAL GLOBE, INC. ALL RIGHTS RESERVED. BACKGROUND AERIAL PHOTOGRAPHY IS THE 2008 1-FOOT RESOLUTION STOCKTON/MODESTO AERIAL PHOTOGRAPHY FROM DIGITAL GLOBE ACQUIRED FROM LANDISCORP. CONTACT KSN INC. FOR MORE INFORMATION.

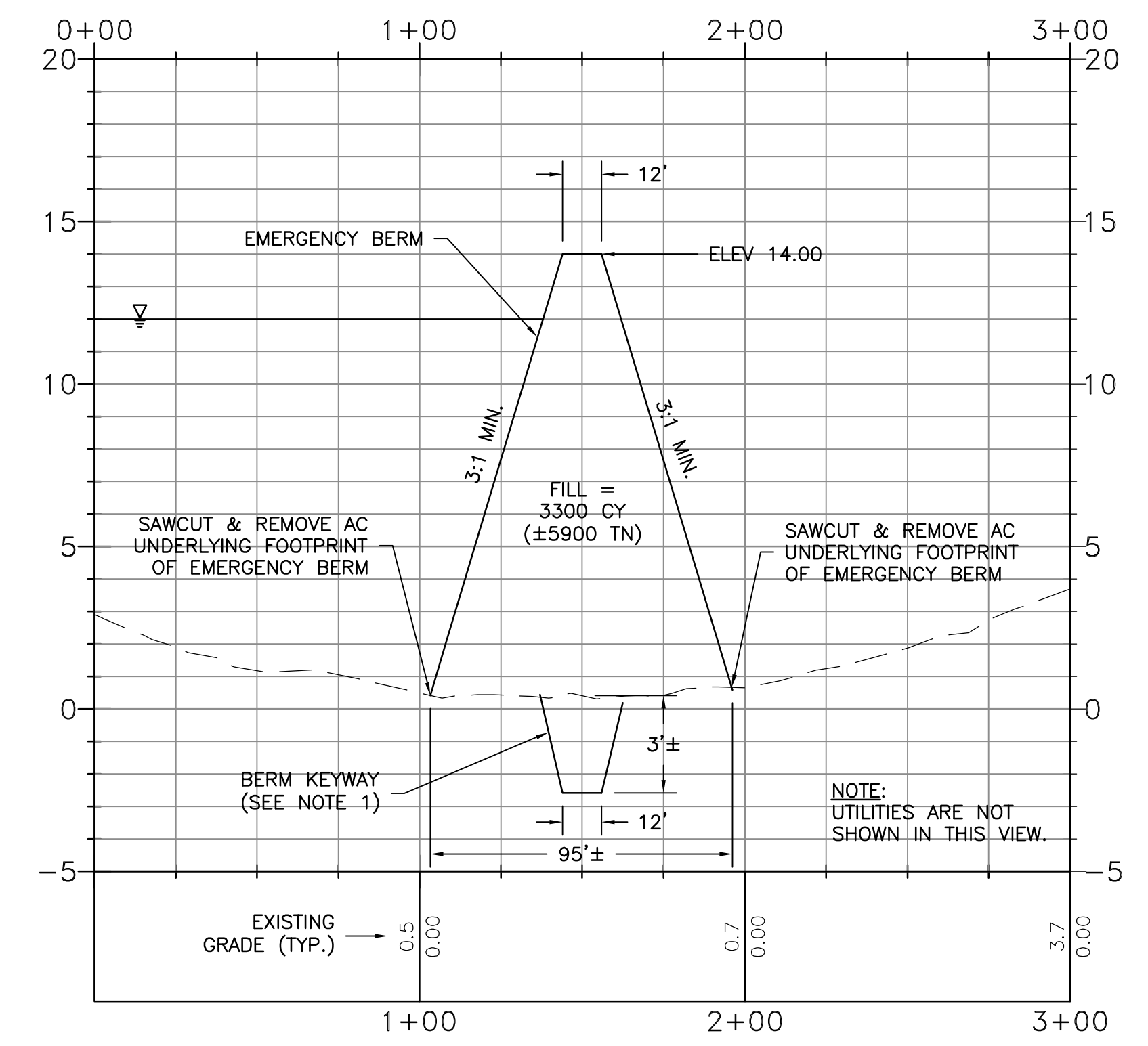
LEGEND

AC	ASPHALT CONCRETE
CA	CABLE
CCTV	CLOSED CIRCUIT TELEVISION
CMPA	CORRUGATED METAL PIPE ARCH
DI	DROP INLET
EX.	EXISTING
FM	FORCE MAIN
G	GAS
KV	KILOVOLT
OH	OVERHEAD
RCP	REINFORCED CONCRETE PIPE
S	SANITARY SEWER
SD	STORM DRAIN
STL	STEEL
TDC	TOP DEAD CENTER
W	WATER

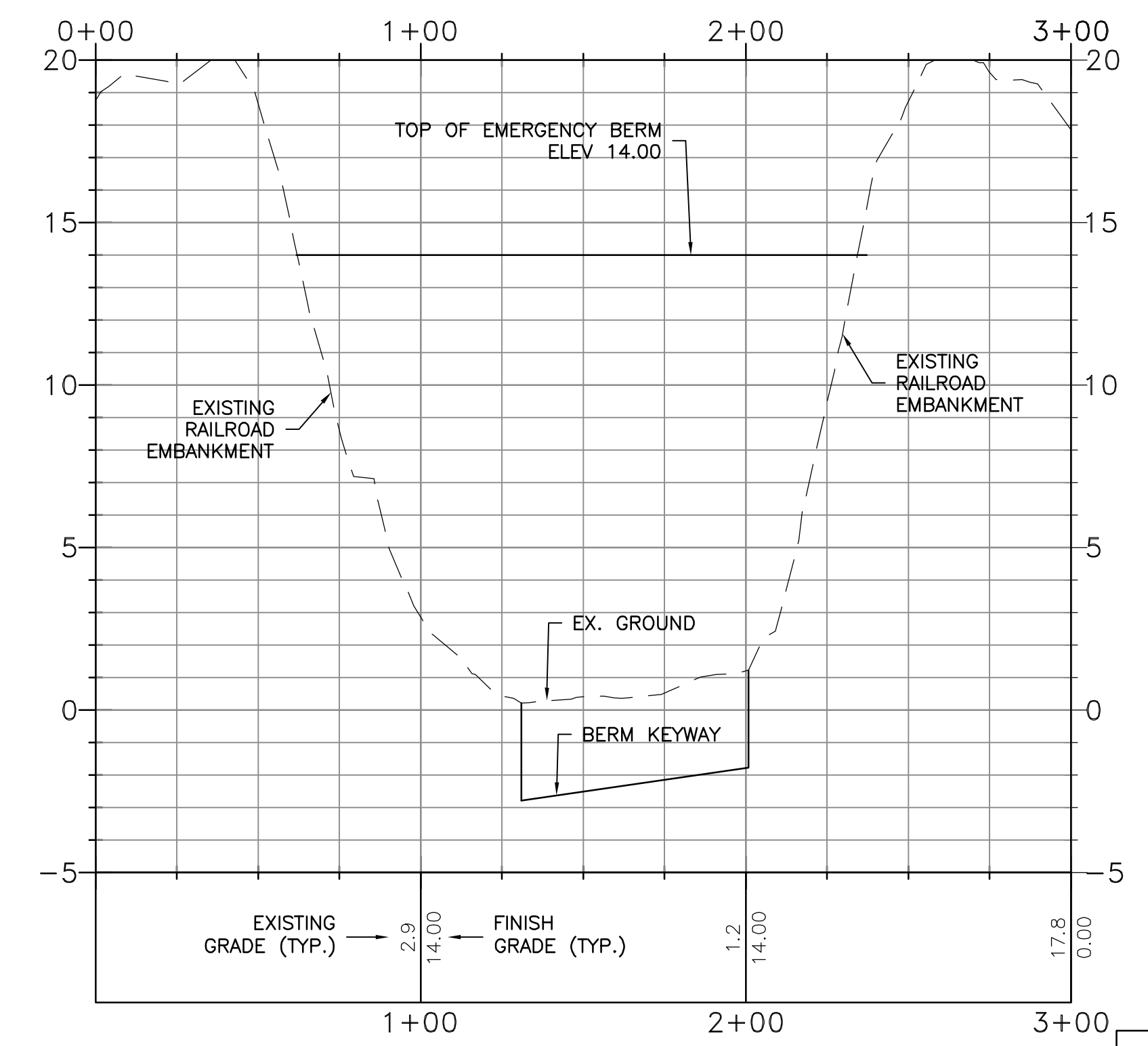
- NOTES:**
- CARE SHALL BE TAKEN WHEN EXCAVATING BERM KEYWAY. ADJUST DEPTH OF BERM KEYWAY AS NECESSARY (I.E. MAKE SHALLOWER AND WIDER) AS TO NOT CREATE CONFLICT WITH UNDERGROUND UTILITIES.
 - REMOVE ALL AC PAVEMENT, VEGETATION, TREES, AND FENCING WITHIN FOOTPRINT OF EMERGENCY BERM.
 - PLUG STORM DRAIN LINES AS NOTED.
 - FILL MATERIAL SHALL BE COMPACTED TO A MINIMUM 90% RELATIVE COMPACTION IN ACCORDANCE WITH ASTM D1557.
 - EMERGENCY BERM ELEVATIONS ARE BASED ON A 100-YEAR STORM EVENT AND MAY NEED TO BE REVISED BASED ON ACTUAL STORM AND WATER LEVEL CONDITIONS.
 - FRESNO AVENUE EMERGENCY BERM IS ONLY TO BE CONSTRUCTED IN CONJUNCTION WITH PORT OF STOCKTON RELIEF CUT.

BASIS OF ELEVATIONS
ELEVATIONS SHOWN ARE BASED ON THE NORTH AMERICAN VERTICAL DATUM OF 1988 (NAVD 88).

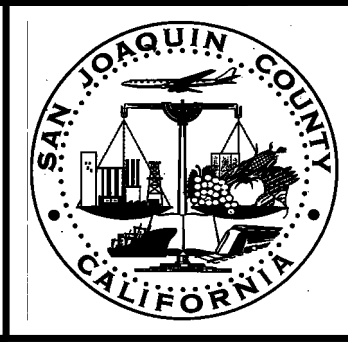
FRESNO AVENUE PROFILE
SCALE
HORIZONTAL: 1"=40'
VERTICAL: 1"=4'



BERM ALIGNMENT PROFILE
SCALE
HORIZONTAL: 1"=40'
VERTICAL: 1"=4'



PRELIMINARY
NOT FOR CONSTRUCTION
- FOR STUDY ONLY -



SAN JOAQUIN COUNTY
OFFICE OF EMERGENCY SERVICES

KSN INC.
KJELDSSEN
SINNOCK
NEUDECK
Civil Engineers
and Land Surveyors
Post Office Box 844
711 N. Pershing Avenue
Stockton, CA 95201-0844
Office: (209) 946-0268
Faxes: (209) 946-0296
E-mail: KSN@ksninc.com

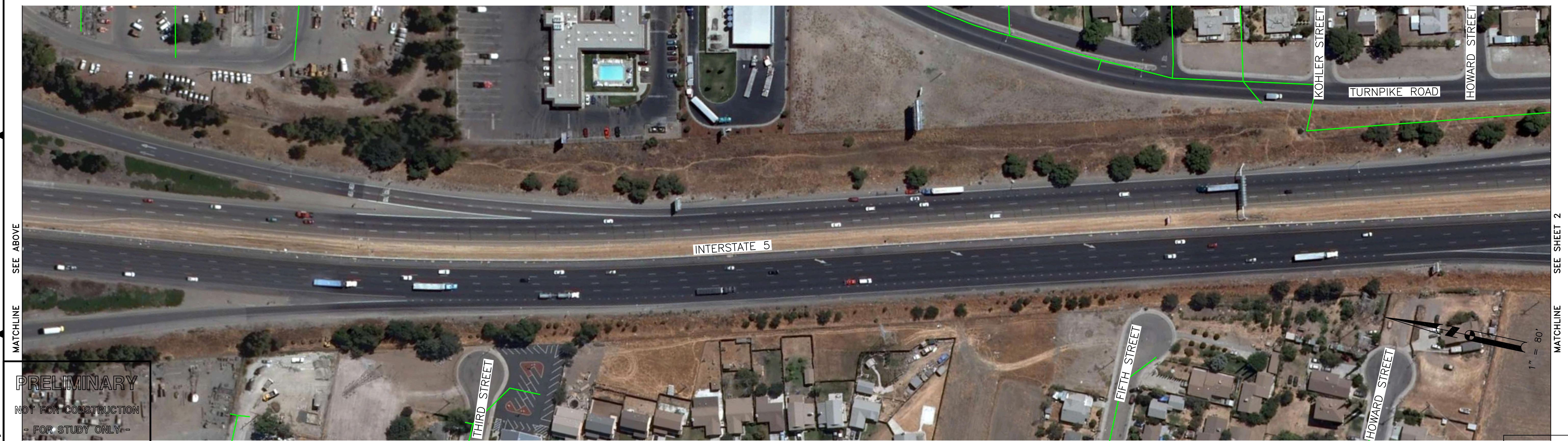
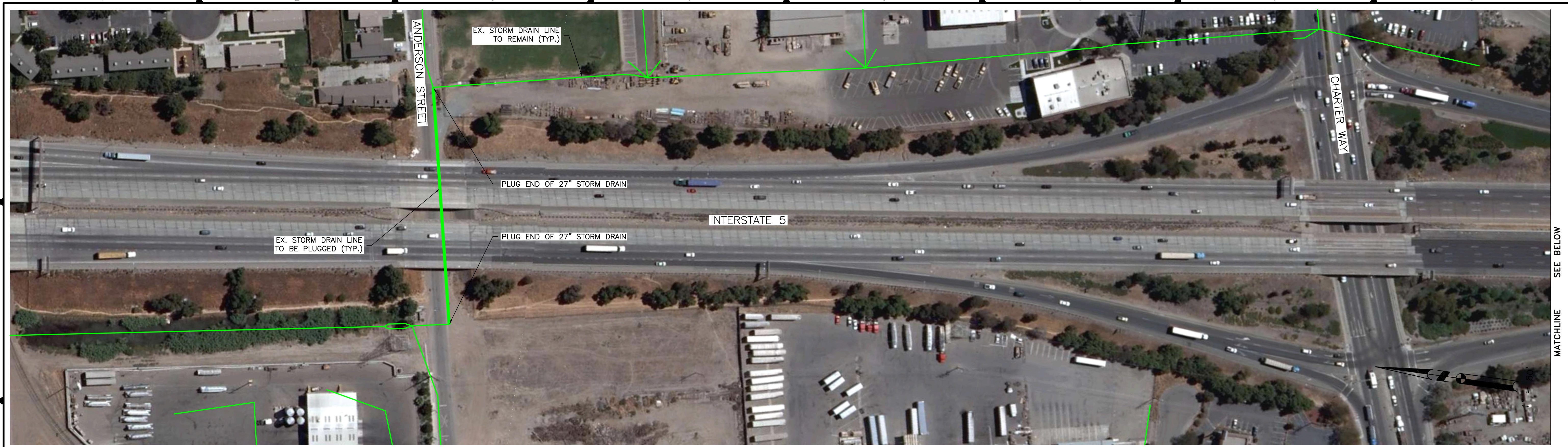
**CITY OF STOCKTON
SAN JOAQUIN COUNTY
BOGGS TRACT**

**FRESNO AVENUE EMERGENCY BERM
PRELIMINARY ENGINEERING DESIGN (P.E.D.)**

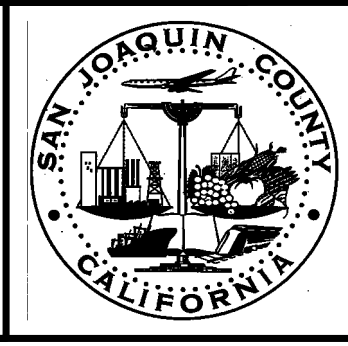
Revisions					Design EEA	Scale AS SHOWN	Date MARCH 2010
No.	Description	Date	By	Aprvd. By			
					Drawn EEA	Original Drawing Scale 0 1/2" 1"	Sheet Number 1 Of 1
					Check CHN	Project File No. 1942-0030	

FILE SPEC: P:\1942_SJC_Flood_Flight_Maps\0030-FCM FEMA Pilot Maps\0030\05_Civil\PED_Boggs_Emergency BERM_Fresno.dwg
PLOT DATE: May 06, 2010 - 7:45am

FILE SPEC: P:\1942_SJC_Flood_Flight_Maps\0030-FCM FEMA Pilot Maps\0030\05_Civil\PED_Boggs_Cross Culvert_LBoggs.dwg
 PLOT DATE: May 05, 2010 - 4:04pm



PRELIMINARY
 NOT FOR CONSTRUCTION
 - FOR STUDY ONLY -



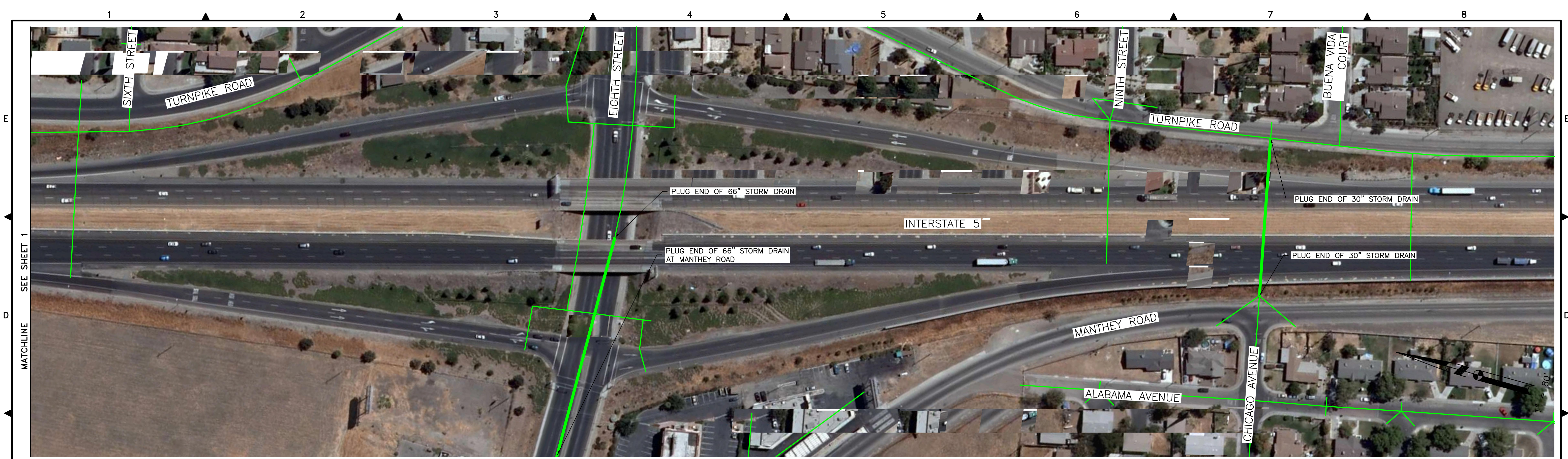
SAN JOAQUIN COUNTY
 OFFICE OF EMERGENCY SERVICES

K S N
 INC.
 KJELDSSEN
 SINNOCK
 NEUDECK
 Civil Engineers
 and Land Surveyors
 Post Office Box 844
 711 N. Pershing Avenue
 Stockton, CA 95201-0844
 Office: (209) 946-0268
 Faxes: (209) 946-0296
 E-mail: KSN@ksninc.com

CITY OF STOCKTON
 SAN JOAQUIN COUNTY
 BOGGS TRACT
BOGGS TRACT CROSS CULVERTS
 PRELIMINARY ENGINEERING DESIGN (P.E.D.)

Revisions				
No.	Description	Date	By	Aprvd. By

Design EEA	Scale AS SHOWN Original Drawing Scale 0 1/2" 1" 	Date MARCH 2010
Drawn EEA		Sheet Number 1 Of 2
Check CHN		Project File No. 1942-0030



LEGEND

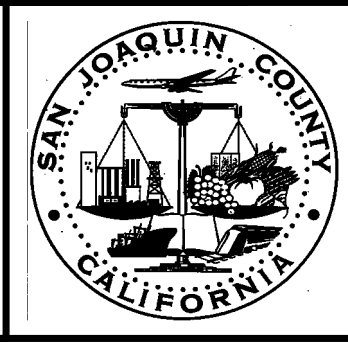
AC	ASPHALT CONCRETE
CA	CABLE
CCTV	CLOSED CIRCUIT TELEVISION
CMPA	CORRUGATED METAL PIPE ARCH
DI	DROP INLET
EX.	EXISTING
FM	FORCE MAIN
G	GAS
KV	KILOVOLT
OH	OVERHEAD
RCP	REINFORCED CONCRETE PIPE
S	SANITARY SEWER
SD	STORM DRAIN
STL	STEEL
TDC	TOP DEAD CENTER
W	WATER

- NOTES:**
1. PLUG STORM DRAIN LINES AS NOTED IN ORDER TO PROHIBIT STORMWATER FROM FLOWING FROM ONE SIDE OF INTERSTATE 5 TO THE OTHER.
 2. STORM DRAIN LINES SHALL BE PLUGGED ONLY IN CONJUNCTION WITH THE CONSTRUCTION OF THE BOGGS TRACT EMERGENCY BERMS.

INCLUDES COPYRIGHTED MATERIAL OF DIGITAL GLOBE, INC. ALL RIGHTS RESERVED. BACKGROUND AERIAL PHOTOGRAPHY IS THE 2008 1-FOOT RESOLUTION STOCKTON/MODESTO AERIAL PHOTOGRAPHY FROM DIGITAL GLOBE ACQUIRED FROM LANDISCORP. CONTACT KSN INC. FOR MORE INFORMATION.

BASIS OF ELEVATIONS
 ELEVATIONS SHOWN ARE BASED ON THE NORTH AMERICAN VERTICAL DATUM OF 1988 (NAVD 88).

PRELIMINARY
 NOT FOR CONSTRUCTION
 - FOR STUDY ONLY -



SAN JOAQUIN COUNTY
 OFFICE OF EMERGENCY SERVICES

KSN INC.
KJELDSSEN SINNOCK NEUDECK
 Civil Engineers and Land Surveyors
 Post Office Box 844
 711 N. Pershing Avenue
 Stockton, CA 95201-0844
 Office: (209) 946-0268
 Faxes: (209) 946-0296
 E-mail: KSN@ksninc.com

CITY OF STOCKTON
SAN JOAQUIN COUNTY
BOGGS TRACT
BOGGS TRACT CROSS CULVERTS
 PRELIMINARY ENGINEERING DESIGN (P.E.D.)

Revisions				
No.	Description	Date	By	Aprvd. By

Design EEA	Scale AS SHOWN	Date MARCH 2010
Drawn EEA	Original Drawing Scale 0 1/2" 1"	Sheet Number 2 Of 2
Check CHN		Project File No. 1942-0030

FILE SPEC: P:\1942_SJC_Flood_Flight_Maps\0030-FCM FEMA Pilot Maps\0030\05_Civil\PED_Boggs_Cross Culvert_Boggs.dwg
 PLOT DATE: May 06, 2010 - 7:01am